

# Carriageway

Available in TAS

**adbri** MASONRY  
working together



Recommended For



Courtyards



Paths



Driveway Safe\*

\*When laid onto a suitably prepared base.

Carriageway is a driveway safe concrete paver with edges that look rumbled. Easy to use, these pavers from Adbri Masonry take on a unique, aged appearance once laid.



## COLOUR OPTIONS

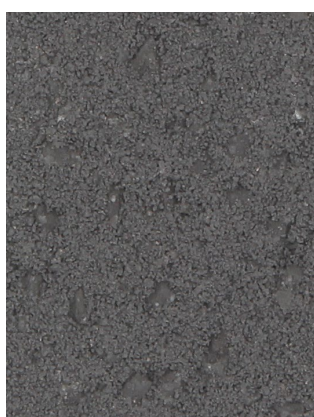
Sandstone



Red Ochre



Charcoal



Due to natural variations in aggregates, colour tones may vary from batch to batch.

Whilst these swatches provide a good indication of the products colour, you should always sight product samples before use.



## AVAILABLE SIZE



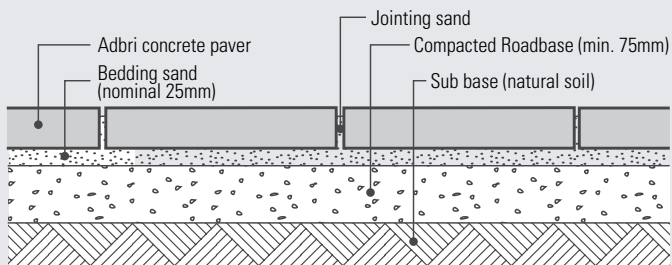
**Carriageway**  
25 units per m<sup>2</sup>

## TECHNICAL INFORMATION

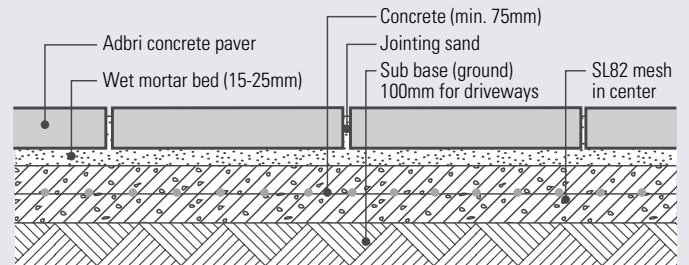
Range	Size (mm) L x D x H	No. per m <sup>2</sup>	Slip Resistance rating	No. per pallet	Colours
Carriageway	200 x 200 x 50	25	P5 - very low slip risk	420	Sandstone Red Ochre Charcoal

## FOUNDATION OPTIONS AND GENERAL INSTALL GUIDE

### FLEXIBLE INSTALLATION - ROADBASE & SAND



### RIGID INSTALLATION - CONCRETE BASE



**NOTE:** Always seeks advice from a qualified professional when laying pavers on sloped land or where soil conditions or load pressures are unknown.

BRICKS

| BESSER® BLOCKS

| PAVERS

| RETAINING WALLS



1300 365 565 | [www.adbrimasonry.com.au](http://www.adbrimasonry.com.au)

ABN: 31 009 687 521 | ISSUE DATE: 10/2017

**adbri**MASONRY  
working together